

The Professional Choice for CNC PROGRAM MANAGEMENT

Management of part programs and associated production documents is often a time consuming task for CNC programmers and operators. CIMCO NC-Base 5 takes care of that job and goes one step further. By providing an integrated and highly flexible management, search and editing environment, programmers and operators are guaranteed to work more effectively.

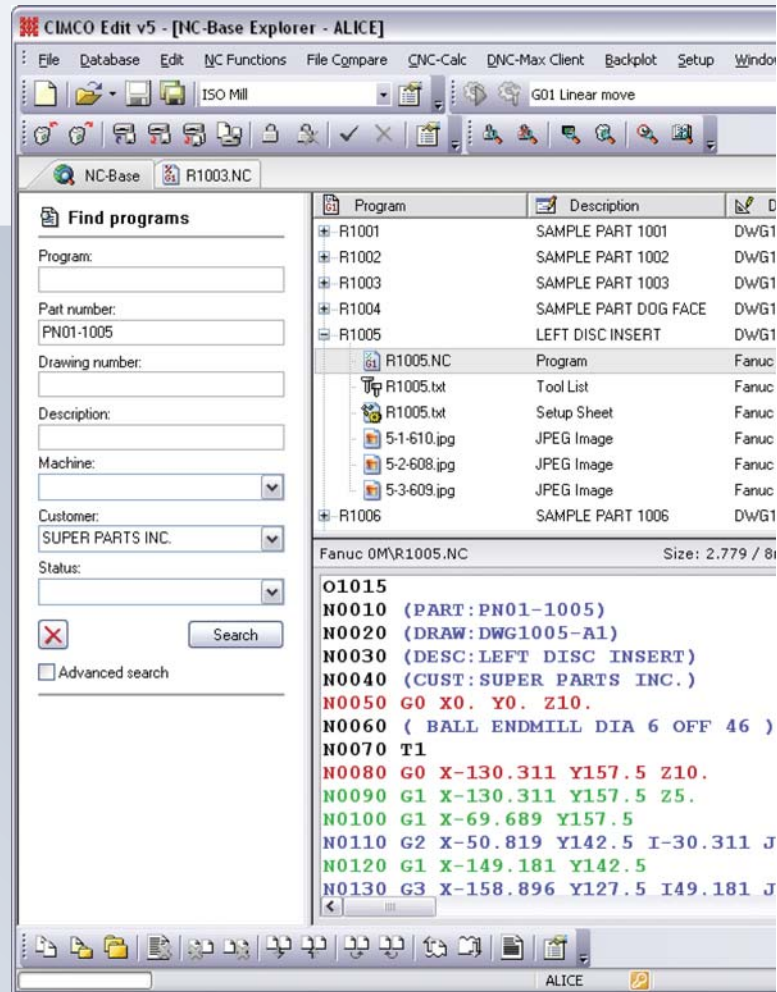
Information Management

Achieving product and quality goals today requires that the correct information and data get to the right individuals and equipment as efficiently as possible. NC-Base is the CNC program management tool that allows you to organize and manage your CNC programs and related production documents most effectively through the use of a reliable and fast SQL relational database.

CIMCO NC-Base is production centric, designed to be used by people in the programming department and on the shop floor. With NC-Base CNC programmers and production staff can assemble virtual folders containing all the necessary data used by machinists, operators, quality staff, and others who are responsible for finished parts.

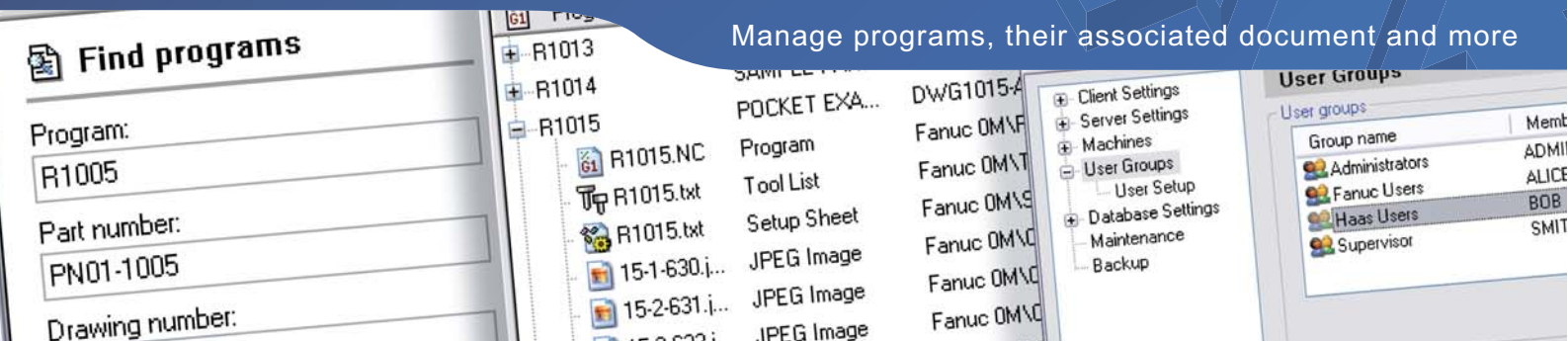
Why just send CNC programs to the shop floor when you can also provide setup sheets, tool lists, images, and other vital information required to manufacture parts? This information may be accessed from PCs running the NC-Base Client or printed out for manual distribution. Either way, NC-Base helps ensure the right part gets made right every time.

CNC operators can access and update the database directly from the CNC control, or any PC on the shop floor.



NC-Base 5 provides a highly flexible management, search and editing environment

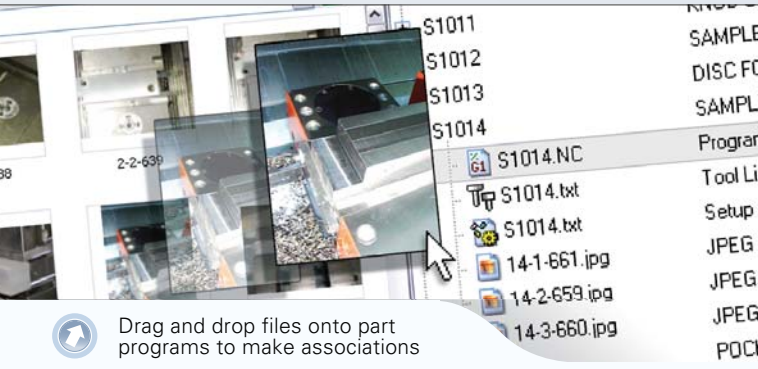
Manage programs, their associated document and more



For more information visit us at www.cimco-software.com

Storage and Retrieval

Effective storage requires an organized framework for managing and accessing vital production information. Using industry standard relational SQL databases like Microsoft SQL and MySQL, CIMCO NC-Base provides a fast, flexible, and reliable system for all your production information.



Documentation

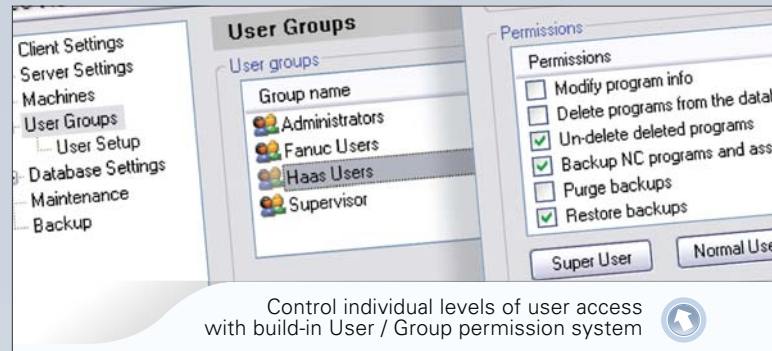
Associate all types of production data with your CNC programs to minimize mistakes and scrap. You may associate files created outside CIMCO Edit such as tool lists, setup sheets inspection notes, etc. or have them created automatically from data contained in your CNC program. You may also launch external applications for viewing or editing of all file types.

Version Control

CIMCO NC-Base features a comprehensive, yet easy to use, version control system that automatically tracks any changes made, not only to the CNC programs, but also to associated production documentation. Every version of a file is stored in the system, along with information about when the change was made, who made it and why it was made. The operator can at any time create a new version or restore an older version. Using the integrated compare function, different version can be quickly compared side by side.

User	Time	Version	Comments
		4	Current Version
ADMIN	14:49:59	3	Part Ready
ADMIN	14:49:59	3	Backup created
ADMIN	14:49:59	2	Program file edited
ADMIN	14:49:46	2	Tool change / Re
ALICE	14:49:23	2	Backup created
ALICE	14:49:23	1	Program file edited
ALICE	14:49:05	1	New program auto

Automatically track changes made to programs and associated documentation



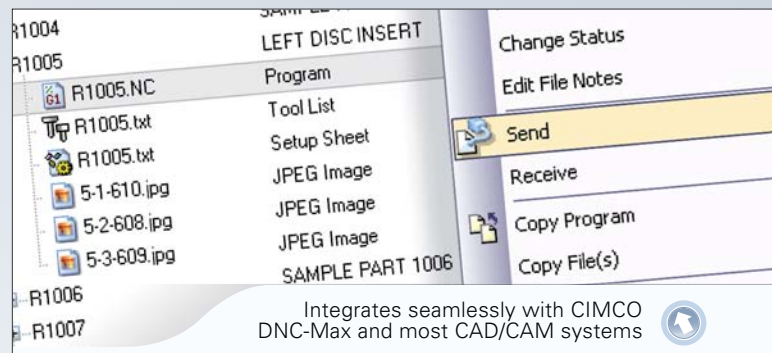
User Management

Controlling who can access and modify information is a critical component in any information management system. CIMCO NC-Base achieves this by using a highly flexible user/group permission system that allows the administrator to specify who is allowed to view, modify, approve files etc.

System Integration

CIMCO NC-Base is fully integrated with the DNC-Max 5, CIMCO's flagship CNC networking solution, allowing operators to request and retrieve CNC programs or save "as-run" CNC programs directly from the CNC control or NC-Base client.

CIMCO NC-Base integrates seamlessly with most CAD/CAM applications. Using the auto import function programs generated in the programming department are automatically imported into the database. Existing ERP/PDM systems can extract data directly from the SQL database. Program information can also be exported to text files, MS Excel spreadsheets, etc.



Automated backup

Using the NC-Base backup server, a complete backup of all the information in the database, including part programs, associated production documentation etc. is automatically performed every day. In case of a backup failure system administrators are automatically notified by e-mail.

Reseller

Europe

CIMCO Integration
Lyngby, Copenhagen
Denmark

Tel: +45 45 85 60 50
Fax: +45 45 85 60 53

Website: www.cimco-software.com
E-mail: info@cimco-software.com

North America

CIMCO Integration
Oakboro, North Carolina
USA

Tel: +1 704 644 3587
Fax: +1 704 645 7162